



10-1-1955

## The Chironian Vol. 17 No. 3

New York Medical College

Follow this and additional works at: [https://touro scholar.touro.edu/nymc\\_arch\\_journals](https://touro scholar.touro.edu/nymc_arch_journals)



Part of the [Higher Education Commons](#), and the [Medicine and Health Sciences Commons](#)

---

### Recommended Citation

New York Medical College. (1955). The Chironian Vol. 17 No. 3. Retrieved from [https://touro scholar.touro.edu/nymc\\_arch\\_journals/85](https://touro scholar.touro.edu/nymc_arch_journals/85)

This Book is brought to you for free and open access by the NYMC Archives Publications at Touro Scholar. It has been accepted for inclusion in The Chironian by an authorized administrator of Touro Scholar. For more information, please contact [touro.scholar@touro.edu](mailto:touro.scholar@touro.edu).

C  
H  
I  
R  
O  
N  
I  
A  
N

*Special  
Progress Report*

**Alumni Campaign**  
**New Metropolitan Hospital**  
**New Wing of College Bldg.**

**OCTOBER, 1955**

**VOL. 17, NO. 3**

*Official Journal of*  
**Alumni Association of the New York Medical College**  
**FLOWER AND FIFTH AVENUE HOSPITALS**



# The Chironian

Published quarterly by the

ALUMNI ASSOCIATION OF THE  
NEW YORK MEDICAL COLLEGE

FLOWER AND FIFTH AVENUE HOSPITALS, INC.

1 EAST 105TH STREET

NEW YORK 29, N. Y.

OCTOBER, 1955

VOL. 17, No. 3

BOARD OF GOVERNORS OF THE  
ALUMNI ASSOCIATION  
NEW YORK MEDICAL COLLEGE  
FLOWER AND FIFTH AVENUE  
HOSPITALS, Inc.

#### OFFICERS

*President* ..... Lawrence B. Slobody, '36  
*Past President* ..... John S. Herrlin, '23  
*1st Vice-President* ..... Leonard Paul Wershub, '27  
*2nd Vice-President* ..... Irving S. Shiner, '37  
*Secretary* ..... C. Donald Kuntze, '46  
*Treasurer* ..... Martin L. Stone, '44  
*Necrologist* ..... Van Alstyne H. Cornell, '00  
*Directors* ..... Walter L. Mersheimer, '37  
                                Carl C. Salzman, '24  
                                Donald S. Jurnove, '36  
                                Salvatore J. Detrano, '41  
                                E. Edward Napp, '33  
                                Julius Blankfein, '28

#### ALUMNUS TRUSTEES

Frederick M. Dearborn, '00 Charles L. Murdock, '48

#### FACULTY ALUMNI SENIORS DIRECTORS OF DEPARTMENTS

J. Clifford Hayner, '19 Lawrence B. Slobody, '36  
Lois C. Lillick, '53 Stephen P. Jewett, '10  
Charles A. Turtz, '15 Frank J. Borrelli, '33  
Milton J. Wilson, '18 Joseph H. Fobes, '01  
J. A. W. Hetrick, '18 Reuel A. Benson, '03  
Sprague Carleton, '06 Ralph Snyder, '50

#### PUBLICATION COMMITTEE

*Editor Chairman*  
Joseph H. Fobes, 1901

*Associate Editor*  
J. Clifford Hayner, 1919

*Associate Editor*  
Sprague Carleton, 1906

*Associate Editor*  
Harry Leinoff, 1927

*Associate Editor*  
Saul A. Schwartz, 1930

*Associate Editor*  
Frank J. Borrelli, 1933

*Associate Editor*  
George Nagamatsu, 1934

*Associate Editor*  
Irving Shiner, 1937

*Associate Editor*  
Ralph Snyder, 1950

*Associate Editor*  
Virginius Mattia, 1950

#### ALUMNI COMMITTEES

The following Chairmen have been appointed by the President

*Publication Committee*  
Joseph H. Fobes, 1901

*Banquet Committee*  
Carl Salzman, 1924

*Membership Committee*  
E. Edward Napp, 1933

*Audit Committee*  
Harry D. Leinoff, 1927

*Election Committee*  
John Herrlin, 1923

*Budget Committee*  
Martin L. Stone, 1944

*Welfare Committee*  
J. Clifford Hayner, 1919

*Ground Hog Day Committee*  
Frank J. Borrelli, 1933

*Administrative Assistant*  
Martha Benson

*...from the president's desk*



### LOOKING TO THE FUTURE

**D**URING our recent Open House, an enthusiastic group of alumni had a preview of our immediate future—the time when our new building will be completely equipped and in full use. What they could not see that evening were the overcrowded lecture rooms and laboratories which made it a vital necessity.

The finest educational program, the most outstanding faculty and the most promising students can live up to what is expected of them only when physical facilities are adequate to their needs. Recognizing this fact, and realizing fully our responsibility to maintain and strengthen our traditionally high standards of education and research, many alumni have already contributed generously to the Building and Development Fund. A substantial portion of the immediate million dollar goal will come from outside sources, but full alumni participation is vitally important.

As alumni, we can, and should, take the lead in achieving the success which will encourage continuing an even greater public participation in the long-range program designed to keep our College in the forefront in medical education and research.

In the past we have built an imposing record of pioneering accomplishments with such advanced concepts as the student internship program, our outpatient psychiatric work, comprehensive public health and preventive medicine activity, and many others. Now, the future is our urgent responsibility, and each one of us can help to insure that that responsibility is met.

Proud of our College, and of its heritage of service, we can look to the future with confidence, knowing that each of us has played an important part in keeping our College at the top. Success is assured if each of us plays his part, and I am confident that we shall.

*John H. Petrick*

# Alumni Renew Activity In Building-Development Program

Alumni activity in the New York metropolitan area for the New York Medical College—Flower and Fifth Avenue Hospitals Building and Development Fund program got off to a fast start September 26 and October 6 when regional chairmen from New York and New Jersey attended sparkplug meetings called by John S. Herrlin, Jr., '23, chairman of the Alumni Division of the Fund.

The first order of business at both meetings was progress reports by Dr. Herrlin; Dean Ralph E. Snyder, '50; and Julius Blankfein, '28, chairman, Alumni Special Gifts Committee.

Dr. Herrlin reported that, to date, the Alumni Committee has raised approximately \$80,000 of its \$140,000 quota. The Alumni Committee proper has secured 90 gifts totalling \$31,229; of which the Faculty-Alumni section has secured 79 gifts totaling \$45,915.

In his report, Dr. Herrlin drew attention to the fact that although the summer months were slow for fund raising because so many committee chairmen and workers were on vacation, alumni must now renew their efforts to bring the campaign to a successful conclusion during the next several months.

"For those committees which are now in the process of organization it means an active campaign, and for those committees which have been operating for some time this will mean an intensive follow-up," he said.

## Alumni Get Mailing

Dr. Herrlin also reported that a general letter over his signature enclosing a pledge card and a casebook has been sent to all alumni throughout the country, where it was not possible to secure a regional chairman. (A list of regional chairmen with their respective areas appears on page 5 of this issue of THE CHIRONIAN.)

Serving with Dr. Herrlin as honorary chairmen of the Alumni Committee are: Reuel A. Benson, '03; and Roy Upham, '01; Committee members are: Horace E. Ayers, '09; Julius

Blankfein, '28; Salvatore J. Detrano, '41; Archie M. Harris, '33; Louis Rene Kaufman, '04; Carl C. Salzman, '24; Saul A. Schwartz, '30; Lawrence B. Slobody, '36; Martin L. Stone, '44; Abner I. Weisman, '32; and Leonard P. Wershub, '27.

As chairman of the Alumni Special Gifts Committee, Dr. Blankfein reported that he and his co-chairman, Saul A. Schwartz, '30, have enlisted twenty-six alumni to solicit gifts of \$1,000 and over. The members of this committee have already secured contributions and pledges in excess of \$22,000, he said.

Serving on the Alumni Special Gifts Committee are: Samuel Avnet, '37; Morris Bloom, '30; Abraham Bohrer, '28; Jesse M. Brown, '34; William J. Colonnell, '29; Joseph S. Ephriam, '34; Arthur Feder, '24; Harold Friedlander, '29; Frederick M. Garfield, '38; Forest Hayes, '21; Marcus Kogel, '27; Jessie Labanowski, '26; Joseph V. Lanza, '25; Peter A. Micelli, '38; John J. O'Brien, '36; Alfred E. Passera, '29; Louis G. Raff, '24; Raymond Ratnoff, '36; Harold H. Riker, '33; Morris D. Rudick, '32; Mortimer Schochet, '30; Carl C. Salzman, '24; Fannie S. Stoll, '28; Paul R. Tornambe, '37; Harry Weiss, '31; and Irving Yarvin, '24.

## Alumni Lecture Room

In his report, Dr. Blankfein also called attention to the fact that the 119-seat lecture room on the fourth floor of the new wing of the college has been designated as the Alumni Lecture Room, and that the chairs are available exclusively for subscription by Alumni as memorial gifts.

An alumnus contributing \$1,000 or more to the Building and Development Fund may have his own name or that of some other alumnus memorialized by a plaque in the Lecture Room. Thus far, contributions have been received for thirty-one memorial chairs. (Names of alumni who have made these memorial gifts will be found on page 5 of this issue of THE CHIRONIAN.)

In an overall progress report of the Building and Development Fund program, Dean Snyder said that over \$360,000 has been contributed so far by the three major divisions—College-Hospitals, Men's and Women's. He urged all alumni to make a greater effort for the Building and Development program during the next few months, pointing out that active alumni support can serve as a vital motivating force to public participation in the program.

Following these meetings, the regional chairmen announced that they would call a series of similar alumni meetings in each district in the near future.

### Regional Chairmen

Following is a list of the alumni who are regional chairmen of areas throughout the country in which organized groups of alumni are actively participating in the Building and Development Fund program. If you aren't already supporting the work in your area, contact the chairman in your area today.

#### New York Metropolitan Area

- Manhattan, Abner I. Weisman, '32
- Bronx, S. Carlyle Trattler, '23
- Brooklyn, Sigmund U. Rubin, '26
- Queens, Carl C. Salzman, '24
- Staten Island, Charles H. Thom, Jr., '41
- Nassau County, Archie M. Harris, '33
- Suffolk County, Charles Dusenberry, '42
- Westchester County, Tobias M. Rubin, '43

#### Upper New York State

- Albany, Richard G. Day, Jr., '43
- Buffalo, Michael S. Blick, '37
- Rochester, Saul Commins, '40
- Newburgh, Charles B. Reed, '15

#### Northern New York

- Watertown, Warren W. Daub, '46
- Syracuse, Lyman J. Spire, '38
- Utica, Pasquale Ciaglia, '38

#### California

- San Louis Obispo, Joseph Sarullo, '41
- Fresno, Nathalie M. Wolfe, '43
- San Francisco, Savin D. Calabrese, '36

#### Connecticut

- New Haven, Joseph L. Kaplowe, '30
- Hartford, Louis H. Gold, '32

### Florida

- Miami, Abraham I. Cohen, '22, General Chairman
- Pensacola, Nathan Arenson, '37
- Orlando, Solomon D. Klotz, '37
- Fort Pierce, Henry E. Branca, '41

### New Jersey

- Essex County, Saul Firtel, '41
- Hudson County, Robert Shipman, '40
- Monmouth County, Samuel Stevens, '47
- Bergen County, Maurice Re, '37
- Union County, John P. Cannis, '40
- Passaic County, Ciro S. Tarta, '43



The thirty-first chair is added to the 119-chair Alumni Lecture Room as Elias R. Stoller, '43, presents his pledge for \$1,000 to President J. A. W. Hetrick, '18. The presentation was made October 17th when Dr. Stoller, and over 150 other alumni, attended a special Open House and preview showing of the new six-story, million-dollar wing at New York Medical College.

### Alumni Subscribe 31 Chairs In New Alumni Lecture Room

Twenty-nine alumni have subscribed thirty-one of the one hundred nineteen memorial chairs which will be placed in the Alumni Lecture Room on the fourth floor of the new wing of New York Medical College.

*(Continued on Page 15)*

# Alumni Turn Out In Force For Preview of New Wing

Despite flood conditions surrounding the metropolitan area, over 150 enthusiastic alumni from New York, New Jersey and Connecticut returned to New York Medical College on the evening of October 17th to attend a special open house and preview showing of the new six-story, million dollar wing.

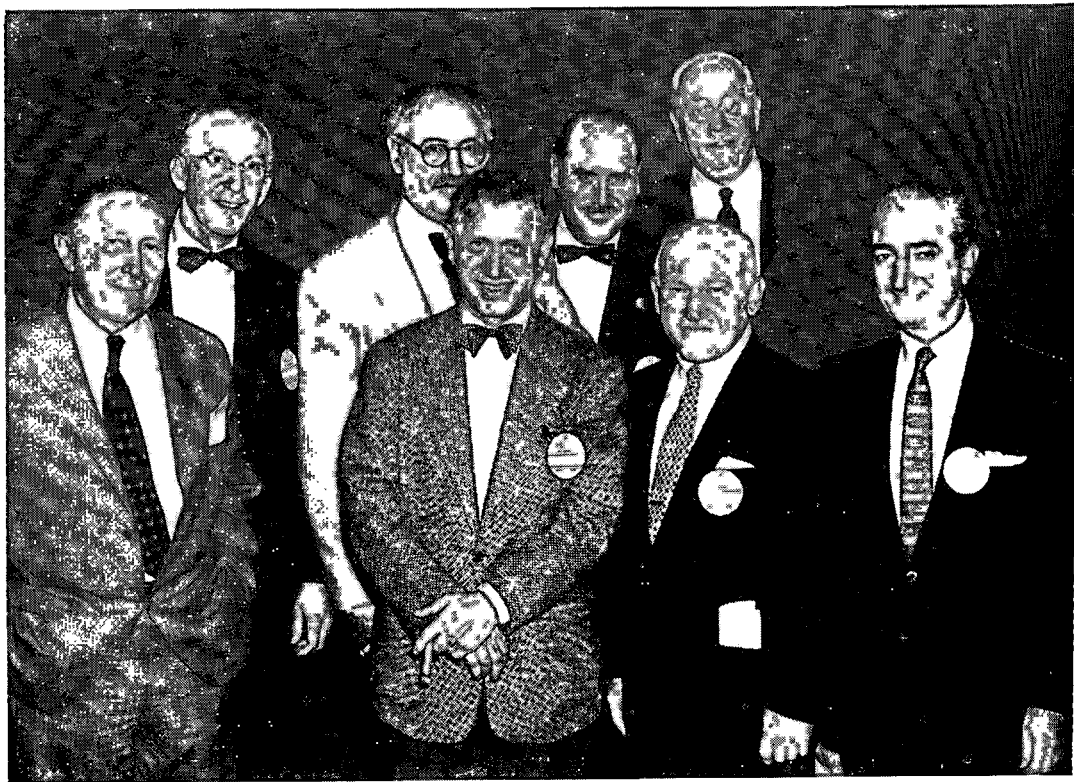
It was the first open house to be held in the new wing, and the first opportunity that the majority of attending alumni had to inspect the addition with its ultra-modern facilities.

President J. A. W. Hetrick, '18, Dean Ralph E. Snyder, '50, and John S. Herrlin, Jr., '23, chairman of the Alumni Division of the Building and Development Fund were on hand to greet the visitors. After registering, alumni

accompanied student guides on special tours of the new facilities.

During their tours, alumni expressed approval and sincere appreciation for the modern, spacious, well lighted additional space available to the college for lecture rooms, laboratories, conference rooms, clinics and offices. Much of the space is now, or soon will be, occupied by the departments of Urology, Obstetrics and Gynecology, Psychiatry, Public Health, Physiology, Pharmacology, and Bacteriology.

They expressed special interest in the 119-chair Alumni Lecture Room, unique library and medical records facilities, and \$150,000 laboratory for research into the causes of circulatory problems.



During the open house, attending alumni committee chairmen took the opportunity to talk over mutual problems. Pictured here: (l. to r.) Top row — John Herrlin, '23; Abner I. Weisman, '32; Carl C. Salzman, '24; President J. A. W. Hetrick, '18. Front row — Julius Blankfein, '28; Sigmund Rubin, '26; Carlyle Trattler, '23; Morris Blum, '23.

The new library, which is on the second floor of the new wing, is approximately 200 percent larger than the old one, and shares facilities with the medical records room, a unique departure in medical college libraries. This arrangement allows students and faculty members to study records of a case with full literature on the subject immediately at hand. In addition, other educational materials and the latest in audio-visual aids will be available in the library area.

The ultra-modern laboratory for circulatory research on the fifth floor of the new wing is one of the few research centers in the world equipped with apparatus for diffusion electrophoresis, which measures electrical migration of the blood. Its equipment includes two ultracentrifuges, one of which is capable of spinning a sample at 70,000 times a minute, the equivalent of 450,000 times the force of gravity.

(Photographs of some of the facilities of the new wing appear on pp. 8-9.)

Alumni who attended the open house were:

**Class of 1896**

Edward Devol, New York City.

**Class of 1901**

Joseph H. Fobes, New York City.

**Class of 1904**

Louis Rene Kaufman, New York City.

**Class of 1910**

Stephen Jewett, New York City.

**Class of 1915**

Charles A. Turtz, New York City.

**Class of 1916**

Phillip Schoenfeld, Astoria, Long Island.

**Class of 1917**

R. Spencer Familton, Springfield, New Jersey; W. Jay Snyder, Weehawken, N. J.

**Class of 1918**

J. A. W. Hetrick, New York City; Milton J. Wilson, New York City.

**Class of 1921**

Solomon S. Feigin, New York City; Joseph Kasnetz, Brooklyn, New York; Pincus A. Stahl, New York City.

*(Continued on Page 14)*

## Rochester Area Alumni Hold Dinner Meeting

Alumni activity in upstate New York was fostered in mid-October by Saul Commins, '40, chairman of the Rochester area Alumni Division of the Building and Development Fund.

On October 13th, alumni in that area gathered for dinner at the Irondequoit Country Club in Rochester. The object of the dinner was to give upstate New York alumni a chance to get together, reestablish ties with the college and take a more active interest in its affairs.

Featured speaker at the meeting was Dean Ralph E. Snyder, who brought alumni up to date on the progress the college has made since they were graduated, and outlined the ten-year building and development program.

Other alumni who attended the meeting were: Maurice A. Barnard, '17, of East Rochester; Thomas D. Benson, '42, of Rochester; Ellsworth S. Deuel, '39, of Penfield; John F. McCabe, '47, and Howard D. Mitchell, '15, both of Rochester; and Leman W. Potter, '40, and Joseph J. Kaufman, '35, of Newark, N. Y.

## Nurses Raffle Painting To Raise Money For Fund

Another group which put its shoulder to the wheel for the Building and Development Fund program during September was the Flower and Fifth Avenue School of Nursing.

Over one hundred students and graduate nurses gathered September 29th in the Ninth Floor Lounge of the Flower and Fifth Avenue Hospitals for the first Student-Faculty Tea of the season.

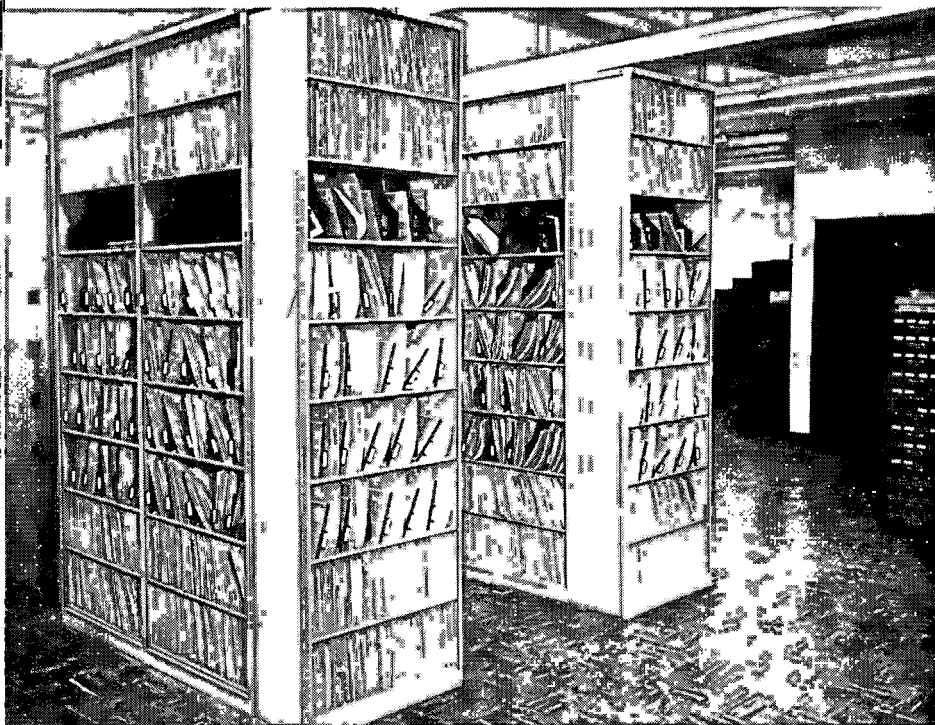
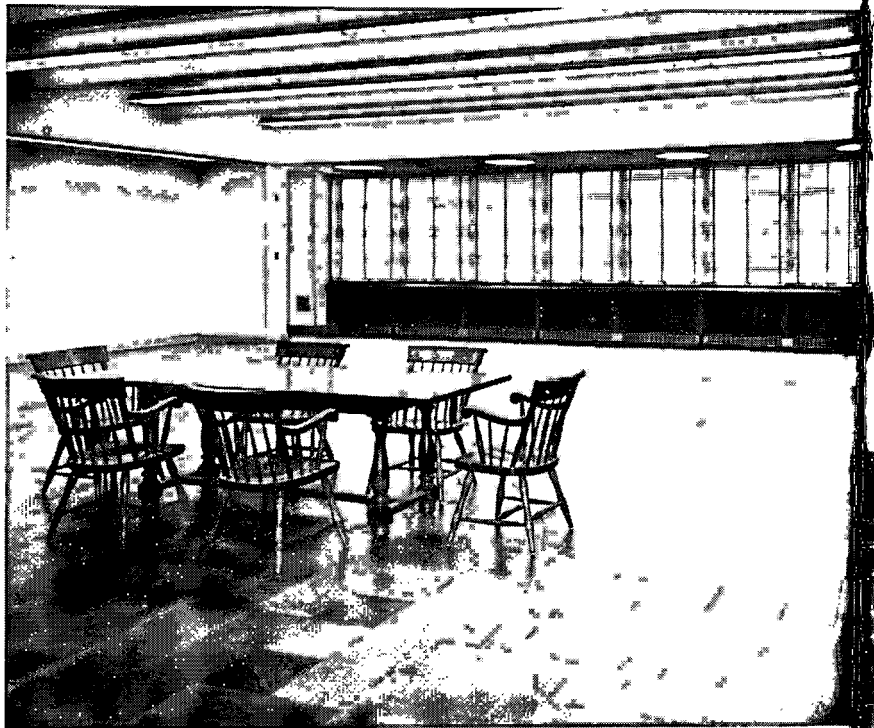
One of the highlights of the affair was a raffle held on "Elm Street," a 16" x 20" oil painting executed last summer in Kennebunkport, Maine by Miss Katherine Halsted while she was taking outdoor painting instruction from New York artist William Fisher. Miss Halsted, a nurse at the Hospital for Special Surgery, in New York, is the sister of Miss Elizabeth Halsted, Associate Director of Nursing Service, Flower and Fifth Avenue School of Nursing.

Proceeds of the raffle, \$250, were donated to the Building and Development Fund.



# the new wing

New, spacious College Library located on second floor of new \$1,000,000 wing.

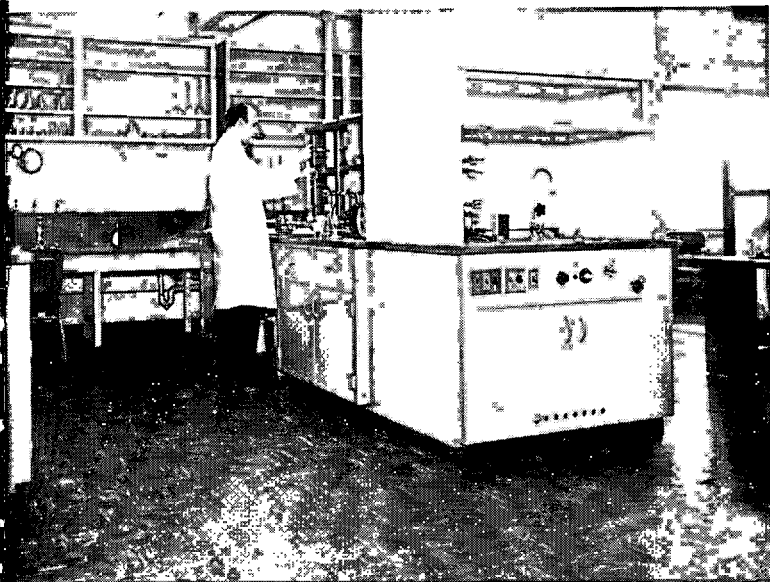


Patient records are now filed in this modern Medical Records Room, directly adjacent to the new Library. This unique arrangement makes possible study of case records with full literature immediately available.

Large  
of six  
in New  
stalled

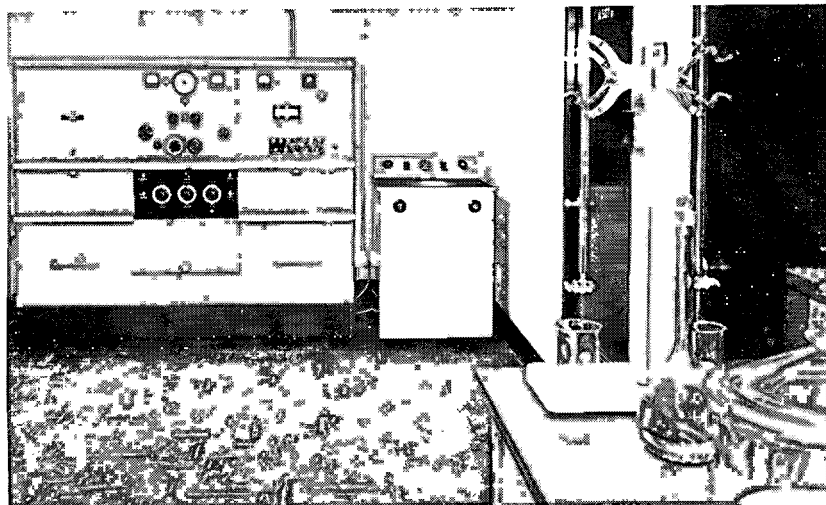
Alu  
flo  
End  
has

Alumni Lecture Room on fourth floor of new College building. Endowment of chairs for this room has been undertaken as a special project of the alumni.



New \$150,000 Gilman Laboratory in the new wing will be used for circulatory research and related work under direction of Harold Eiber, M.D.

Large ultra-centrifuge, at left, one of six such machines now in use in New York area, has been installed in the Gilman Laboratory.



# the New Metropolitan Hospital



New 27 million dollar Metropolitan Hospital at Second Avenue and 97th Street. Seven-story wing in left foreground houses expanded outpatient services and staff quarters.

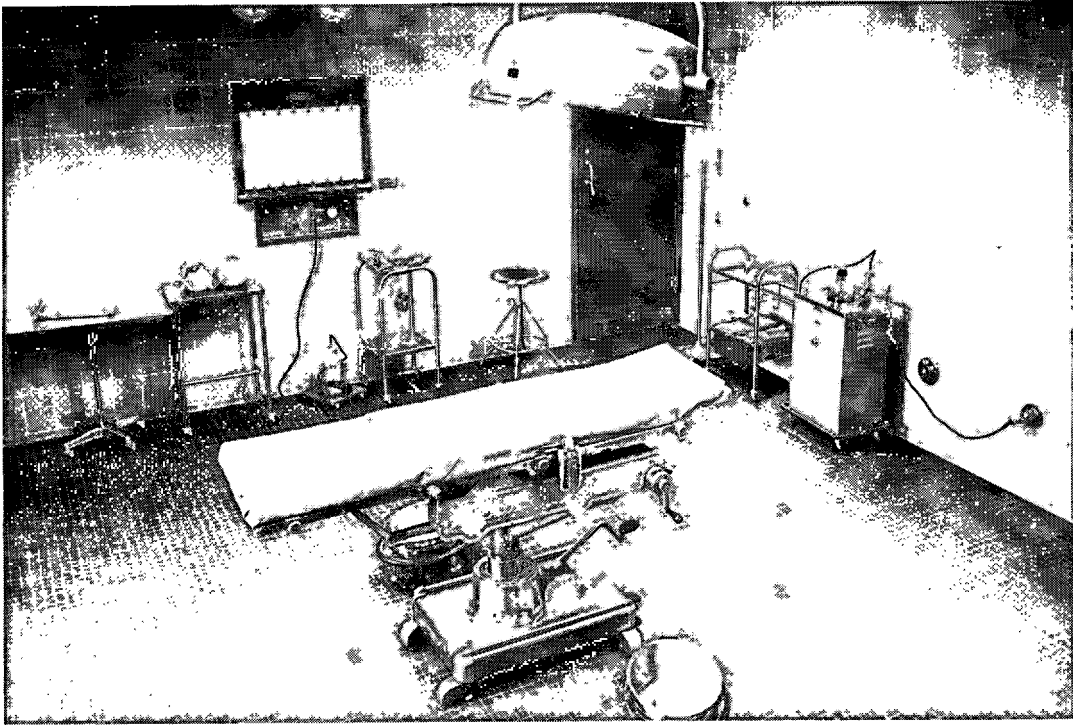
The new \$27,264,000 Metropolitan Hospital, an important component of the new New York Medical College-Metropolitan Medical Center, was formally dedicated in ceremonies presided over by Commissioner of Hospitals Basil C. MacLean, M.D., on Friday, October 28. Among the chief speakers at the dedication, in addition to the Mayor and the Borough President of Manhattan, were Ralph E. Snyder, '50, Dean of the College and Lawrence B. Slobody, '36, president of the Medical Board of Metropolitan, and chief of Pediatrics at the College.

Opened in mid-September when some 550 patients were transferred to it from the 59 year old Metropolitan Hospital on Welfare Island, long familiar to New York Medical College students, the new ultra-modern plant is the institution's third home in its 80-year history. The original hospital was opened on Ward's Island in 1875, and remained at that site until

the move to the then Blackwell's Island in 1893. The new location two blocks square, is bounded by First and Second Avenues and 97th and 99th Streets in the densely populated East Harlem section of Manhattan.

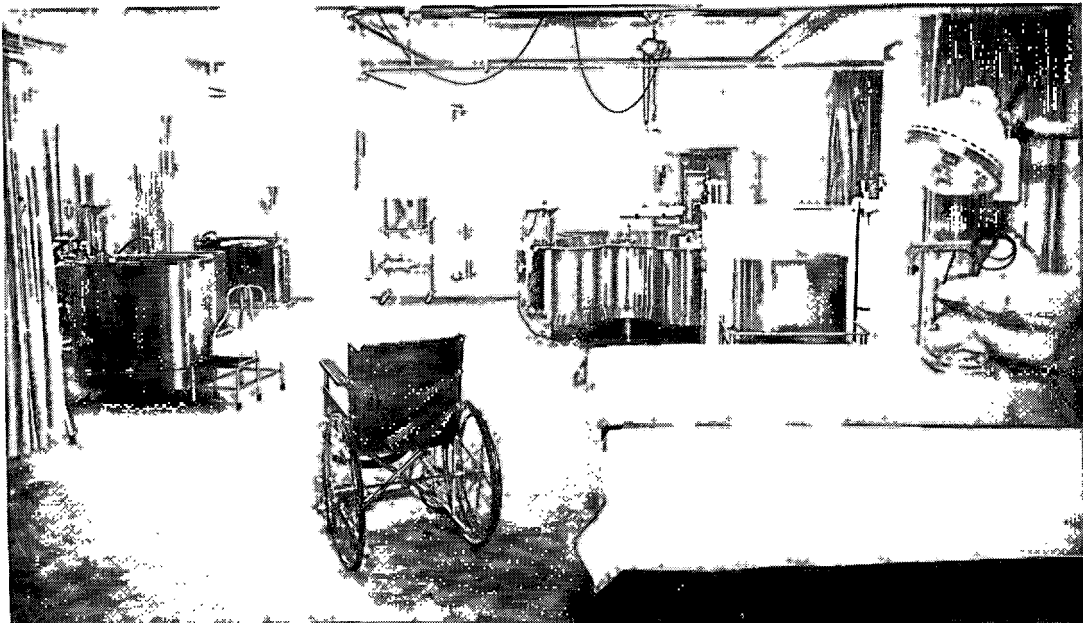
With a bed capacity of 1,059, plus 70 bassinets, this new municipally-owned plant is of completely modern design and equipment, boasting such facilities as a completely air-conditioned surgical area, a fully equipped recovery suite featuring individual oxygen supplies piped from a central source, and a specially designed and equipped physical medicine and rehabilitation section. Staff living quarters and recreational facilities, including a spacious roof-top lounge, are located in the seven-story wing housing the new hospital's outpatient services.

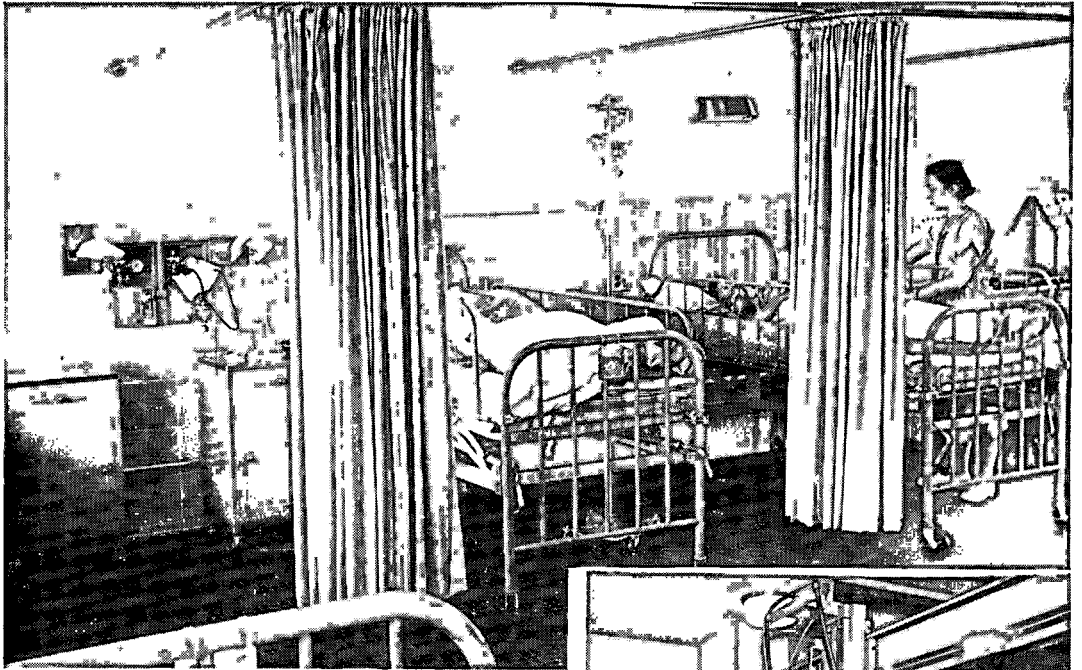
In addition to providing all medical and  
*(Continued on Page 15)*



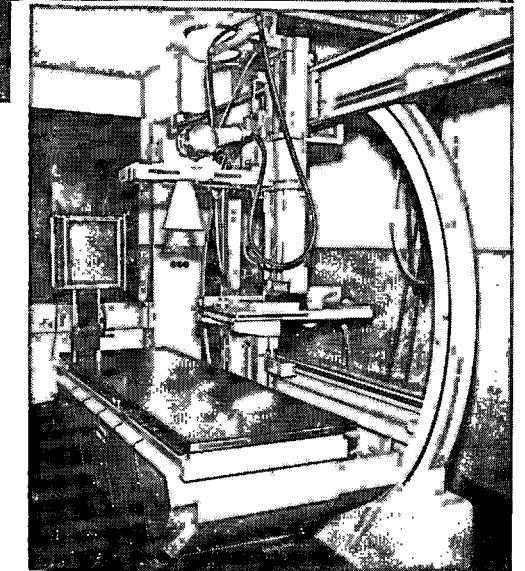
Spacious, well-lighted, tiled operating rooms (above) are fully air-conditioned. View is from observation gallery designed to allow students to observe surgical procedures.

Fully-equipped hydrotherapy room (below) provides Hubbard Tank for treatment of poliomyelitis patients, whirlpool baths, and other treatment devices. It is an important part of the expanded physical medicine and rehabilitation services of the hospital.



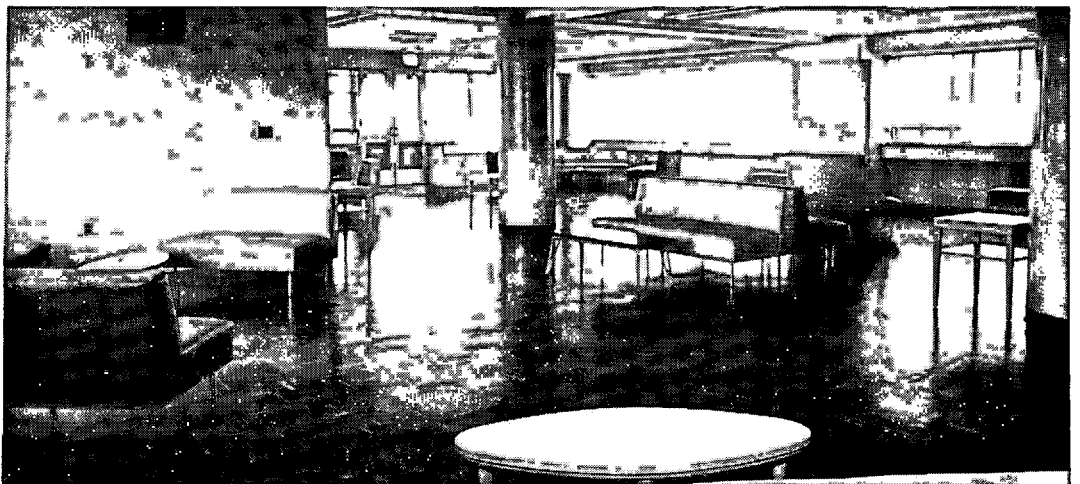


Recovery suite (above) on main surgical floor boasts such facilities as oxygen supplies piped to each bed from a central source. Here patients receive specialized post-operative care under careful supervision.



New diagnostic X-ray machine (right) makes possible wide range of photographs necessary for prompt and accurate determination of patient's diagnosis.

Spacious staff lounge (below) is located on seventh floor of wing housing outpatient services and staff quarters, and provides a sweeping view of the hospital and surrounding area.



# Your Donation or Bequest Can Do These Things

- HELP MAINTAIN our traditionally high standards of professional education and patient care in the face of an ever-expanding student body and a constantly growing patient load.
- HELP STRENGTHEN and improve the physical facilities of the College and the Hospitals in order that students and Staff may stay abreast of all current developments in medical care and research.
- HELP BUILD toward the future so that New York Medical College and its service hospitals, Flower and Fifth Avenue, may always stand ready to meet the needs of medical education, research, and care.

To help provide needed additional educational, research and patient care facilities, or, To provide a memorial chair (\$1,000.) in the name of

..... in the new Alumni Lecture Room, I (we) subscribe to the NEW YORK MEDICAL COLLEGE —FLOWER AND FIFTH AVENUE HOSPITALS BUILDING AND DEVELOPMENT FUND ..... Dollars

(\$ ..... ) payable herewith , or over a three-year period as follows: .....

.....

Signature..... Date.....

Address.....

Please Make Checks Payable to CLIFFORD HEMPHILL, TREASURER  
Contributions Are Deductible For Income Tax Purposes

Please remind me to pay monthly , quarterly , semi-annually .

## Alumni Turn Out

### Class of 1923

Morris Blum, New York City; J. S. Herrlin, Jr., New York City; S. Carlyle Trattler, New York City.

### Class of 1924

Carl C. Salzman, Jackson Heights, New York; Samuel D. Shapiro, New York City; Irving Yarvin, Springfield Gardens, New York.

### Class of 1925

Angelo De Nicola, Brooklyn, New York; Joseph Sileo, Brooklyn, New York.

### Class of 1926

Emanuel Altcheck, New York City; Sig-mund U. Rubin, Brooklyn, New York; Samuel L. Saltzman, New York City.

### Class of 1927

Joel L. Ziprin, New York City.

### Class of 1928

Julius Blankfein, Flushing, New York.

### Class of 1929

Bernard B. Nadell, New York City.

### Class of 1930

Daniel H. Eichner, New York City; Emanuel Rubin, New York City; Mortimer Schochet, Flushing, New York.

### Class of 1931

Gustave Adler, New York City; Harry Barowsky, New York City; Henry L. Drezner, Trenton, New Jersey; Benjamin Friedman, New York City; Manuel J. Scham, New York City.

### Class of 1932

Arthur Frucht, Hempstead, New York; Ricardo, L. Gorbea, New York City; Fred S. Grunwald, Jackson Heights, New York; Walter P. Merkelbach, Bloomfield, New Jersey; A. R. Picollo, Vernon City, New Jersey; Abner Weisman, New York City.

*(Continued on Page 16)*

<hr/> <hr/> <hr/>	<div style="border: 1px solid black; padding: 10px; text-align: center;">STAMP</div>
<p><b>BUILDING AND DEVELOPMENT FUND</b></p> <p><b>NEW YORK MEDICAL COLLEGE</b></p> <p><b>FLOWER AND FIFTH AVENUE HOSPITALS</b></p> <p><b>One East 105th Street,</b></p> <p><b>New York 29, New York</b></p>	

## New Metropolitan

surgical services of a general care hospital, the new Metropolitan will have a contagious disease service of 36 beds, which will absorb part of the load from the present Willard Parker Hospital soon to be closed, and a tuberculosis service of 280 beds.

Announcement of the New York Medical College-Metropolitan Medical Center, hailed as one of the City's major facilities for carrying forward all levels of medical education, was made by New York Medical College President J. A. W. Hetrick, '18, in April of this year, following formal approval by the Commissioner of Hospitals. Formation of the Center and opening of the new Metropolitan Hospital provide New York Medical College with what is believed to be the largest number of teaching beds available to any school in the United States or Canada. The highest type of professional care for patients and application of the latest advances in medical research are assured through the college-hospitals affiliation, and the new hospital provides the finest of teaching facilities for New York Medical College's students.

## Alumni Subscribe

An alumnus contributing \$1,000 or more to the Building and Development Fund may have his own name or that of some other alumnus memorialized by means of a plaque to be affixed permanently in the room.

The names of alumni who have subscribed chairs to date, are: Robert S. Bickley, '07; Julius Blankfein, '28, four chairs; Morris Blum, '23; Alan R. Cantwell, '28; Frank E. Fierro, '33; Ricardo Gorbea, '32; Arthur J. Grossman, '48; John S. Herrlin, Jr., '23, Irving Innerfield, '36; Stephen P. Jewett, '10; Louis Rene Kaufman, '04; Jessie Labanowski, '26; Albert Lesser, '51; Walter P. Merkelbach, '32; Arthur A. Michele, '35; George R. Nagamatsu, '34; Samuel S. Novikoff, '31; Alfred E. Passera, '29; Samuel L. Saltzman, '26; Carl C. Salzman, '24; Mortimer Schochet, '30; Martin Silverstein, '48; Lyman J. Spire, '38; Pincus, '21, and Martin '53; Stahl; Elias R. Stoller, '43; Abner I. Weisman, '32; Leonard P. Wershub, '27; and Milton J. Wilson, '18.

## Other Groups Also Active

### In Building Fund Program

Alumni groups have not been alone in their activity in the Building and Development Fund program for New York Medical College.

One of the most active groups is the Women's Auxiliary. The Soliciting Committee of the Auxiliary swung back into action after a summer breather by holding a meeting at the College on September 27. The major topic of discussion was how and where to solicit funds.

Testimony of the effectiveness of the discussion, and an object lesson to the members of the committee, is inherent in the fact that within an hour after the meeting, Mrs. Carl Zelson, chairman of the group, obtained a \$1,000 grant from the Gitenstein Foundation.

On September 28, Mrs. Alvin Donnenfeld, chairman of the Special Events Committee of the Auxiliary called her group together for a discussion and planning session; and on October 3, Mrs. Samuel Cohen, president, called a general meeting of the Auxiliary. Reports of the two major committees were heard, and plans for the month discussed.

Members of the Auxiliary are now at work sending out letters for additional contributions to meet their \$12,000 goal.

The Men's Memorial and Special Gifts Committee initiated their work in the Fall segment of the Building and Development Fund program at meetings September 20, 21 and 22.

The meetings, called by committee chairman Ralph L. Tompkins, were held in order that members could select names of individuals and foundations to approach for special gifts.

To date, the committee has raised \$223,129 of their \$315,000 goal.

Another progress report meeting, held September 28, was that of the Affiliated Hospitals Committee, called by its chairman, Frank J. Borelli, '33.

Members of the committee scheduled meetings in their respective hospitals and agreed to hold a report meeting November 2.



## Alumni Turn Out

### Class of 1933

Frank J. Borrelli, New York City; E. Edward Napp, New York City; Arthur Stern, Brooklyn, New York.

### Class of 1934

Salvator Altcheck, Brooklyn, New York; Meyer Berliant, New York City; Harry Jasper, Albany, New York; Frederick Milana, Brooklyn, New York; Abraham Rosenthal, Brooklyn, New York; S. E. Wanderman, New York City.

### Class of 1935

Gerard Martorano, Jamaica, New York; Joseph J. Kaufman, Newark, New Jersey.

### Class of 1936

Irving Innerfield, New York City;

### Class of 1937

Samuel S. Cohen, New York City; David Dragutsky, Brooklyn, New York; Walter Mersheimer, Scarsdale, New York; Felix A. Pappalardi, New York City; Irving S. Shiner, New York City.

### Class of 1939

F. A. Gagliardi, Jamaica, New York; Diodato Villamena, New York City.

### Class of 1941

Henry P. Leis, Jr., New York City.

### Class of March 1943

John David Angelides, New York City; Herbert G. Cohen, New York City; Albert Willner, South Orange, New Jersey.

### Class of December 1943

Joseph H. Lede, New York City; Raymond Reilly, North Bergen, New Jersey; Elias R. Stoller, New York City.

### Class of 1944

Mavis A. Kaufman, New York City; Martin L. Stone, New York City.

### Class of 1945

John B. Casale, Jr., New York City.

### Class of 1946

Jerome J. Hoffman, New York City; Alfred E. Mamelok, New York City; Gladys F. Raskin, Brooklyn, New York; Harold Shub, New York City.

### Class of 1947

Norman Ackerman, New York City.

### Class of 1948

Peter H. Ballen, Hempstead, New York; Anna M. Burton, New York City; Alvin M. Donnenfeld, New York City; J. T. Donovan, Tenafly, New Jersey; Arthur J. Grossman, Palisade, New Jersey; Morris Halper, New York City; Arnold W. Pensig, Brooklyn, New York; Alfred Tanz, Brooklyn, New York; Arnold Turtz, New York City.

### Class of 1949

Bernice R. Blackman, Brooklyn, New York; Ruth H. Strang, New York City.

### Class of 1950

Arthur Gillman, New York City; Hillard W. Himes, New York City; Philip A. Marracini, New York City; Ralph E. Snyder, New York City; A. G. Vongries, Pelham, New York; Milton M. Zaret, Scarsdale, N. Y.

### Class of 1951

Loretta Azzeratti, Jamaica, New York; Constance M. Buncke, New York City; Harry S. Buncke, New York City; Alta T. Goalwin, New York City; William Jameson, Jr., Schenectady, New York; Maura J. Lynch, White Plains, New York; Margaret L. Myers, Jackson Heights, New York.

### Class of 1952

B. C. Stevens, St. Albans, New York.

### Class of 1953

Jans Bakke, Woodhaven, New York; Jack Brook, Brooklyn, New York; Robert S. Donnenfeld, New York City; John R. Doyle, New York City; Lois C. Lillick, New York City; Nicholas E. Roberti, Sea Cliff, New York; Irving N. Rubinstein, Brooklyn, New York; Jay P. Sackler, Brooklyn, New York.

### Class of 1954

Chester M. Bernstein, Woodside, New York; Peter P. Brancucci, Yonkers, New York; John Burns, New Rochelle, New York; Alan Bruce Cooper, New York City; Allen W. Fanslow, Devon, Connecticut; Richard D. Grimaldi, New York City; John Geary, New York City; Robert Hirsch, Great Neck, Long Island; David F. Reese, Brooklyn, New York; Louis A. Susca, Jamaica, Long Island; James Trone, New York City.